



UTILITY VESSEL

UV SERIES



DAMEN



TARGET MARKETS AND ACTIVITIES

- Oil, gas and renewables
 - Repair and maintenance
 - Hydrographical survey
 - Dive- and ROV support
- Navigation aids services
 - Buoy laying
 - Hydrographical survey
 - Lighthouse supply
- Aquaculture
 - Installation and removal works
 - Repair and maintenance
 - Delousing
- Environmental protection
 - Fire fighting
 - Oil recovery

The Utility Vessel Series offers owners a flexible offshore workboat solution for inshore and offshore operations.

TO SUPPORT THESE ACTIVITIES OUR UTILITY VESSELS SHARE THE SAME BASIC DESIGN FEATURES:

- Large clear deck areas.
- Cargo hold, stores and offices dedicated to project use.
- A large accommodation, not only for crew but also for project teams.
- A high level of comfort that will make seafarers and non-seafarers feel at home whilst at sea.

Further a wide selection of options is available to tailor your Utility Vessel to suit your requirements.



Our Utility Vessels embody Damen's extensive range of workboats and



- ◀ UV 2711
- ◀◀ UV 3711

The rule length of the UV 2711 is below 24m and the gross tonnage of the UV 3711 is below 500GT. Both can be fitted with all necessary equipment to support the aquaculture industry.



◀ UV 5514

This vessel offers an aft deck of 250sqm and a raised and protected project deck of 90sqm. This latter deck is ideally suited for a LARS, a second workboat or a compact access system.

A project office and project store are located adjacent to the work decks.

The accommodation has 7 single cabins and 20 double cabins. Two day rooms offer privacy for crew and boarding parties.



ADVANCED DESIGN

Propulsion and power generation systems are optimised per project for good fuel economy. For this it is also essential to focus on the right hull form. The UV series therefore adopts the hull form as used for the Damen PSV series. This proven and efficient hull includes a bow design that reduces slamming which results in improved comfort and safety.

EQUIPMENT PACKAGES

- Diesel direct, diesel electric or hybrid propulsion packages
- Fixed shafts or rudder propellers
- Single, multiple or retractable bow thrusters
- Crane, A-frame and access system options
- Basic towing & anchor handling equipment
- Dynamic positioning, 4-point mooring
- And more.....



WORK-LIFE BALANCE

Special attention is given to living and working spaces onboard the vessels. The accommodation is designed to the highest standards, and offers large mess/dayrooms and cabins with en-suite sanitary. Well laid out service and machinery spaces ensure excellent workability and maintainability. All this adds to creating safety and comfort at sea.

...sive global experience with a wide range of offshore vessels.

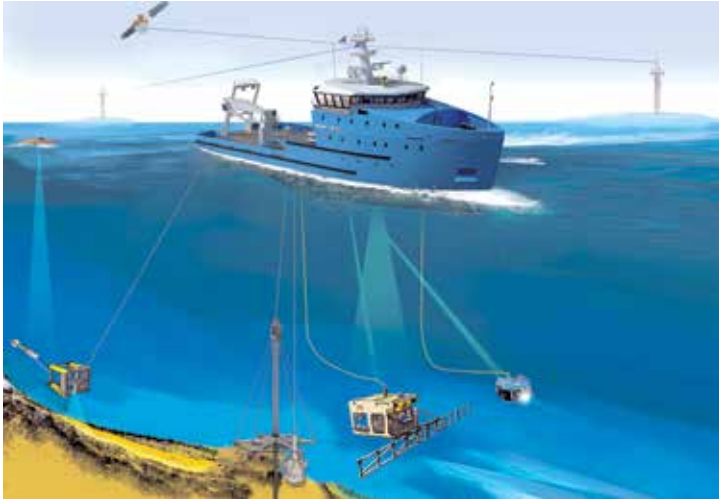


THROUGH-LIFE SUPPORT

At Damen we value the relationship with our customers and therefore we offer a wide-ranging portfolio of after sales services, covering the complete vessel's operational lifecycle. From start-up and warranty period through deployment to lifetime extension. We help our customers achieve their goals in terms of uptime, reliability and costs.

FINANCIAL SOLUTIONS

Our Customer Finance facilities are not just for privately owned, small and medium-sized companies. We also assist government bodies such as port authorities. Damen maintains relations with all Netherlands-based commercial banks, as well as with numerous banks abroad. As a major client of the Dutch Export Credit Agency, Atradius, Damen is highly experienced in arranging export loans with export credit insurance facilities.



UV 2711



DWT (T) 150
 BERTHS (-) 8
 DECK AREA (SQM) 145

UV 3711



DWT (T) 200
 BERTHS (-) 11
 DECK AREA (SQM) 185

UV 4512



DWT (T) 580
 BERTHS (-) 24
 DECK AREA (SQM) 225

UV 5514



DWT (T) 850
 BERTHS (-) 47
 DECK AREA (SQM) 350

UV 6516



DWT (T) 1150
 BERTHS (-) 60
 DECK AREA (SQM) 450

DAMEN TECHNICAL COOPERATION (DTC)

DTC enables you to build your Utility Vessel locally, anywhere in the world. We provide you with a prefabricated shipbuilding kit and can, on request, combine this with expert assistance, training and back-up. By using standardised components it is possible to make a custom-built design, fulfilling the specific local requirements. One in every five Damen vessels are built on-site by DTC.

FOR THE LATEST INFORMATION ON THE UTILITY VESSEL SERIES VISIT DAMEN.COM



UTILITY VESSEL SERIES

DAMEN

DAMEN SHIPYARDS GROUP

Industrieterrein Avelingen West 20
 4202 MS Gorinchem

P.O. Box 1
 4200 AA Gorinchem
 The Netherlands

phone +31 (0)183 63 99 22
 fax +31 (0)183 63 21 89

info@damen.com
 www.damen.com

