



DAMEN MULTI CAT[®] 2712

"FOX FIGHTER"

GENERAL

YARD NUMBER	571687 (Damen Shipyards Hardinxveld)
DELIVERY DATE	June 12th 2014
BASIC FUNCTIONS	Anchor handling, dredger service, supply, towing, hose handling, fish farm works and survey
CLASSIFICATION	Bureau Veritas I ✳ Hull • MACH Tug Unrestricted navigation, • AUT-UMS
NAT. AUTHORITIES	Norwegian Maritime Authority (NMA)
FLAG	Norwegian
OWNER	SAMBA AS

DIMENSIONS (APPROX.)

LENGTH O.A.	27.27	m
BEAM O.A.	12.50	m
LENGTH LOAD LINE	23.99	m
DEPTH AT SIDES	3.90	m
DRAUGHT (AFT)	± 3.05	m
DISPLACEMENT LIGHT SHIP	405	ton(m)
GROSS TONNAGE	296	GT

TANK CAPACITIES (APPROX.)

FUEL OIL	109.5	m ³
FRESH WATER	31.4	m ³
DIRTY OIL	1.5	m ³
SEWAGE	10.5	m ³
SLUDGE	1.3	m ³
HYDR OIL	2.2	m ³
LUB OIL	1.7	m ³
BILGE WATER	4.0	m ³
FW TANKS	51.8	m ³

PERFORMANCES (APPROX.)

BOLLARD PULL (AVERAGE)	34.3	ton(m)
BOLLARD PULL (MAX)	34.8	ton(m)
SPEED	10.5	knots

PROPULSION SYSTEM

MAIN ENGINES	2x Cat C32 TTA ACERT
TOTAL POWER	1790 bkW at 1800 rpm
GEARBOXES	2x Reintjes WAF 572L 7,091 : 1
PROPULSION	2x fixed pitch propellers in Optima nozzles, 1900 mm
BOWTHRUSTER	Kalkman Beta 250H, 200pk / 184kW Hydraulic driven

AUXILIARY EQUIPMENT

GENERATOR SETS	2x Cat. C 04.4, 107 kVA each
HYDRAULIC POWER	Cat C12 TA, 339 kW 1800rpm
FUEL OIL SEPERATOR	Facet MV-11-AG

DECK LAY-OUT

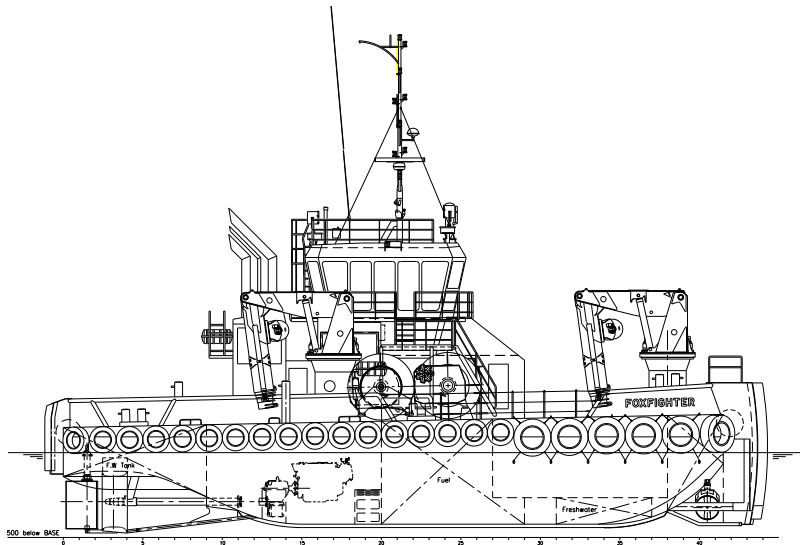
ANCHOR	2x 300 kg Pool TW (HHP)
ANCHOR WINCH	1x Hydraulically driven, Kraaijeveld
DECK CRANES	2x Heila HLRM 230-4SLK 9.8T @ 16,5 m with 5 tons winch incl. load limiting device approx. 100 ton @ 3 m/min pulling force 1 st layer
FRONT/ WIRE WINCH	23 ton @ 10 m/min pulling force 1 st layer 120 ton pull brake holding force 1 st layer 50 ton @ 7 m/min pulling force 1 st layer 90 ton pull brake holding force 1 st layer Kraaijeveld
AFT / WIRE WINCH	
MAKE FRONT & AFT WINCHES	2 x 1200 m, diameter 64 mm, polypropylene wire
WIRE CAPACITY	1x WK double pin type with chain stopper 1x Dromec HPV12000 12Ton @ 8-20m/min
TOWING PINS FRONT	
TUGGER WINCH	

ACCOMMODATION

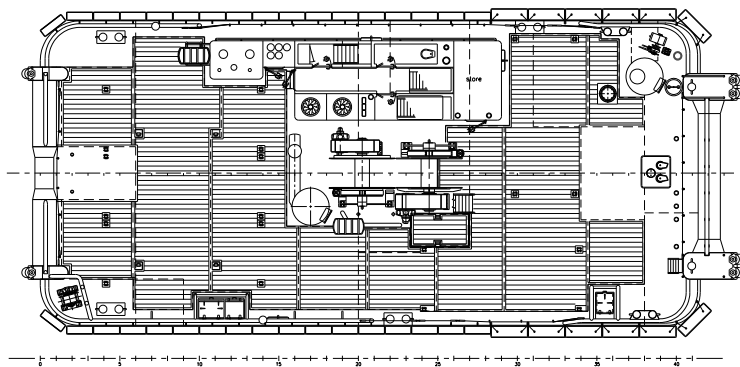
Comfortable heated and air-conditioned accommodation for 7 persons in 5 cabins, galley, sanitary facilities, etc. Two double cabins and three single cabins.

NAUTICAL AND COMMUNICATION EQUIPMENT GMDSS AREA 3

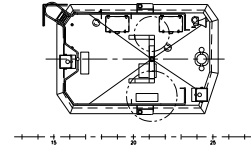
SEARCH LIGHTS	2x Pesch 2000 W
RADAR SYSTEM	1x Furuno, FAR 2117
COMPASS	1x Cassens & Plat, Reflecta 1
GYRO COMPASS	1x Anshuetz, Standard 22
AUTOPILOT	1x Sea pilot 76
GPS	1x Furuno, GP-150 D
ECHOSOUNDER 2X	1x Furuno, FE-700 and FCV295 38 kHz
SPEEDLOG	1x Furuno, DS-80
AIS	1x Furuno, FA-150
INTERCOM	Sigma-700
VHF	2x Thrane&Thrane, RT6222, with DSC
HANDHELD VHF	2x TR-20
SSB	1x Thrane&Thrane, Sailor 6310
INMARSAT - C	2x Thrane&Thrane, Sailor 6110
NAVTEX	1x Furuno, NX-700
WATCH ALARM	1x Marble, 421
CHART COMPUTER	1x Olex



Main deck

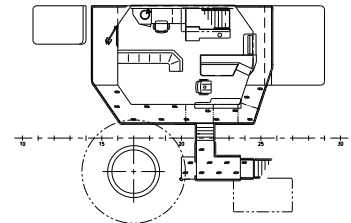


Top deck

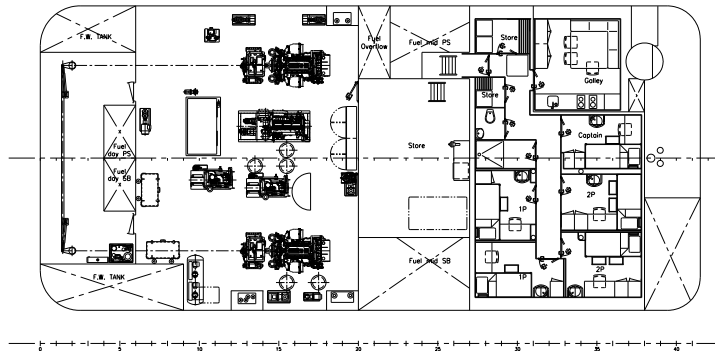


Wheelhouse deck

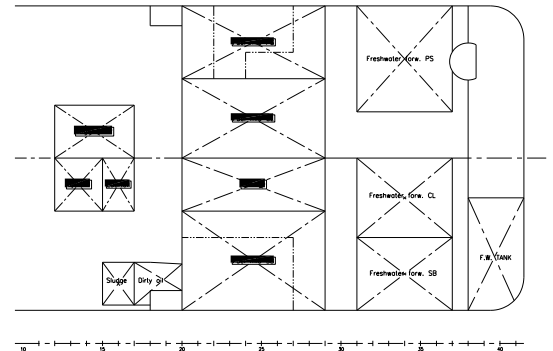
7550 above base



Below main deck



Below tanktop



DAMEN MULTI CAT[®] 2712

"FOX FIGHTER"

DAMEN

DAMEN SHIPYARDS HARDINXVELD

Member of the DAMEN SHIPYARDS GROUP



Rivierdijk 544
3371 EB Hardinxveld-Giessendam

P.O. Box 60
3370 AB Hardinxveld-Giessendam

phone +31 (0)184 61 30 88
fax +31 (0)184 61 77 93

info@damen-hardinxveld.nl
www.damenshipyardhardinxveld.nl

The Netherlands