



## DAMEN ATD TUG® 2412 Twin Fin "SVITZER BARGATE"

### GENERAL

YARD NUMBER	545009
DELIVERY DATE	December 2014
BASIC FUNCTIONS	Towing, mooring and fire fighting operations
CLASSIFICATION	Lloyd's Register ✱ 100 A1 Tug [✱] LMC UMS IWS
FLAG	United Kingdom
OWNER	Svitzer UK Ltd.

### DIMENSIONS

LENGTH O.A.	24.74 m
BEAM O.A.	12.63 m
DEPTH AT SIDES	4.60 m
DRAUGHT	5.77 m

### TANK CAPACITIES

FUEL OIL	71.0 m <sup>3</sup>
FRESH WATER	8.0 m <sup>3</sup>
LUBRICATION OIL	7.0 m <sup>3</sup>
BILGE WATER	3.0 m <sup>3</sup>
DIRTY OIL	3.0 m <sup>3</sup>
SEWAGE	3.1 m <sup>3</sup>
FOAM	11.3 m <sup>3</sup>

### PERFORMANCES (TRIALS)

BOLLARD PULL AHEAD	66.7 ton
SPEED AHEAD	12.3 knots

### PROPULSION SYSTEM

MAIN ENGINES	2x Caterpillar 3516C TA HD / D
TOTAL POWER	4200 bkW (5627 bhp) at 1600 rpm
AZIMUTH THRUSTERS	Rolls Royce US 255
SLIPPING CLUTCHES	Rolls Royce 'built in' type
PROPELLER DIAMETER	2600 mm
FORCED VENTILATION	60.000 m <sup>3</sup> /hr

### AUXILIARY EQUIPMENT

GENERATOR SETS	2x Caterpillar C4.4TA, 230/400 V, 86 kVA, 50 Hz
BILGE/GEN.SERVICE PUMPS	2x Sterling AKHA 5101, 20 m <sup>3</sup> /hr
FUEL OIL FILTERS	2x Coalester filters incl. water separator
SEWAGE PUMP	Electrically driven 6.6 m <sup>3</sup> /hr
COOLING SYSTEM	Box cooling + anti growth system
HYDRAULIC SYSTEM	Double main engine driven pumps
CENTRAL FIRE FIGHTING ER	CO <sub>2</sub> system

### DECK LAY-OUT

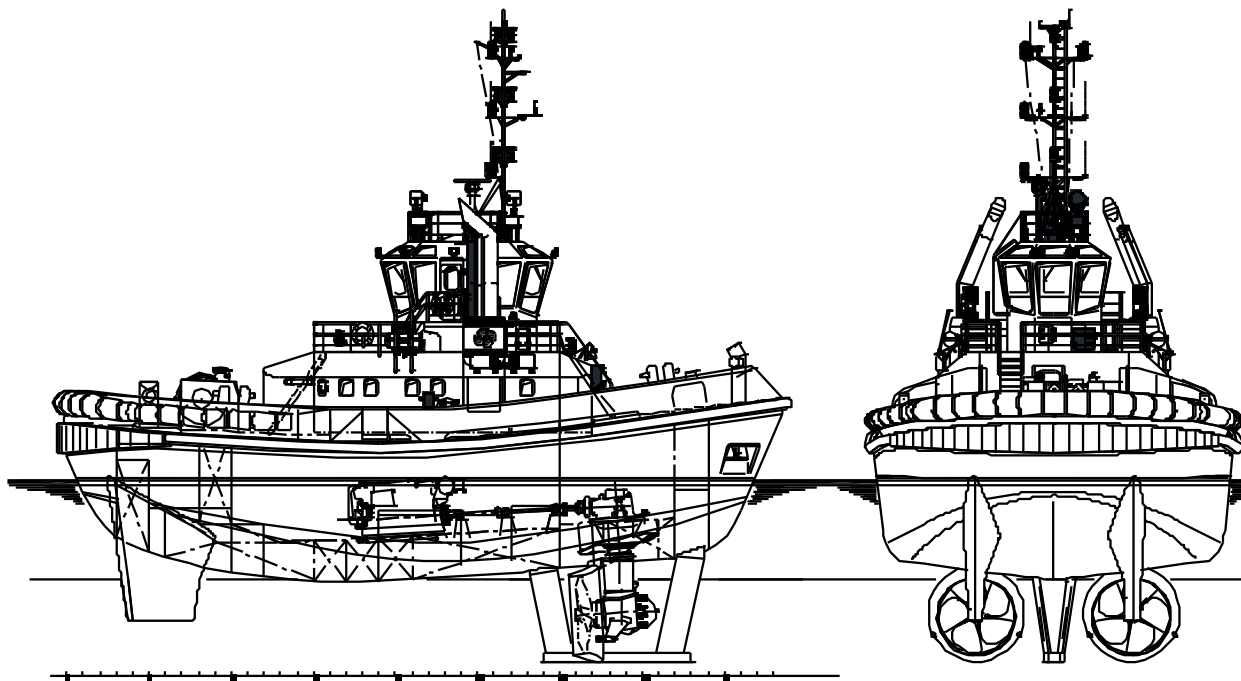
ANCHOR	2x 360 kg Pool (High Holding Power)
ANCHOR WINCH	Electrically driven 10m/min incl. vertical warping head
AFT WINCH	Hydraulically driven split drum 33 ton pull at 11m/min, 150 ton brake with line pull measurement system
FENDERING	Cylinder + block stern fender, D-fender side/fore

### ACCOMMODATION

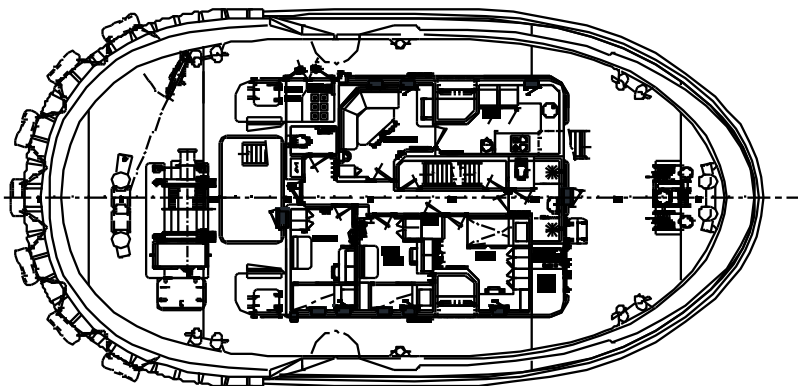
Accommodation for 4 persons, completely insulated and finished with durable modern linings, acoustical Dampa ceiling in the wheelhouse and Bolidt floating floors. Air-conditioned wheelhouse, accommodation and switchboard room. Accommodation above main deck with a captain's cabin, chief engineer's cabin, 1 double crew cabin, galley, mess/dayroom and sanitary facilities.

### NAUTICAL AND COMMUNICATION EQUIPMENT

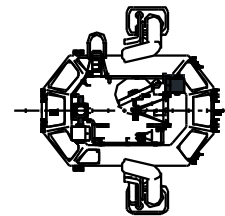
SEARCHLIGHTS	2x Pesch 1000 W
RADAR SYSTEM	Furuno FAR – 2117
COMPASS	Magnetic Kotter
AUTOPILOT	Simrad AP-70
GPS	Furuno GP-150
ECHOSOUNDER	Furuno FE-700
VHF RADIO TELEPHONE	2x Sailor 6222
SSB RADIO	Furuno FS-1575, 150 Watt
INMARSAT	Furuno Felcom 18
ANEMOMETER	Obsermet Windsonic OMC 115



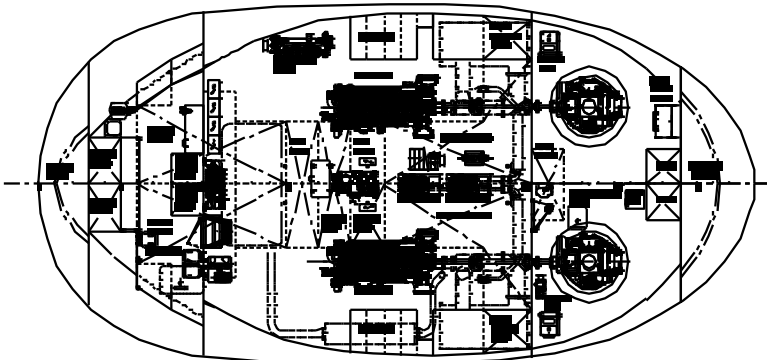
Maindeck



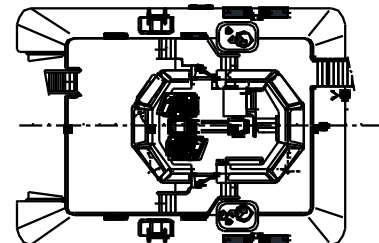
Loaddeck



Below Maindeck



Rudderdeck



# DAMEN ATD TUG<sup>®</sup> 2412 Twin Fin

"SVITZER BARGATE"

## DAMEN

DAMEN SHIPYARDS GORINCHEM

Member of the DAMEN SHIPYARDS GROUP



Industrieterrein Avelingen West 20  
4202 MS Gorinchem

P.O. Box 1  
4200 AA Gorinchem  
The Netherlands

phone +31 (0)183 63 99 11  
fax +31 (0)183 63 21 89

info@damen.com  
www.damen.com