



DAMEN STAN PONTOON® 4512

"YN 524204 / YN524205 / YN 524206"

GENERAL

YARD NUMBERS
DELIVERY DATE
TYPICAL APPLICATIONS
TYPICAL AREA OF OPERATION

CLASSIFICATION

524204, 524205 & 524206
Q3 2015
Deck Cargo, RoRo Cargo
Coastal waters, Estuaries, Harbours,
Inland waters
Bureau Veritas Class I ✕ Hull
Pontoon / Special service - Fuel Oil
Barge, Flash point > 60 degrees
Coastal area's (max. 20NM offshore)
Strength bottom

DIMENSIONS

LENGTH MOULDED 45,00 m
BEAM MOULDED 12,00 m
DEPTH MOULDED 2,50 m
DRAUGHT MAX 1,95 m
DEADWEIGHT.MAX. 675 ton

CAPACITIES

DECK LOAD 12 ton/m²
COMPARTMENTS 14 pcs.
CARGO TANKS 3 x 100 m³
3 x 80 m³

F.O. CARGO SYSTEM

CARGO PIPING DN 100
CARGO PUMP 60 m³/h @ 2,2 bar
440 V / 60 Hz
PUMP STATION Manifold in a closeable casing at
main deck

DESIGN CONDITIONS

SEA WATER TEMPERATURE 0° to +35° C
OUTSIDE AIR TEMPERATURE -5° to +45° C

STANDARD EXECUTION

BOLLARDS 6 double bollards and 2 single bollards at
the stern.
DRAUGHT MARKS At fore, midship and aft on PS and SB every
20 cm
BOARDING LADDERS 2 on SB and 2 on PS in recesses of the hull
CATHODIC PROTECTION Zinc anodes on underwater part of the hull
MANHOLES Flush bolted manholes
BOW RAMP 2 ramp panels connected with chains to
frame Length 7 m, width 9,6 m, load 12
ton/m²
FENDERING On each corner a truck tyre fender
Along both sides two half pipe fenders
Tyre fender system
LIFTING EYES Four lifting eyes on main deck
TRUCK STOP FRAME Two truck stop frames on main deck aft
F.O. CARGO SYSTEM F.O. Cargo system with Cargo Pump and
manifold
BILGE PUMP SET An electrical driven submersible bilge
pump with hose
DE-AERATION One central de-aeration cap
SHORE CONNECTION A shore connection box is provided with
pump start / stop and level alarm buzzer

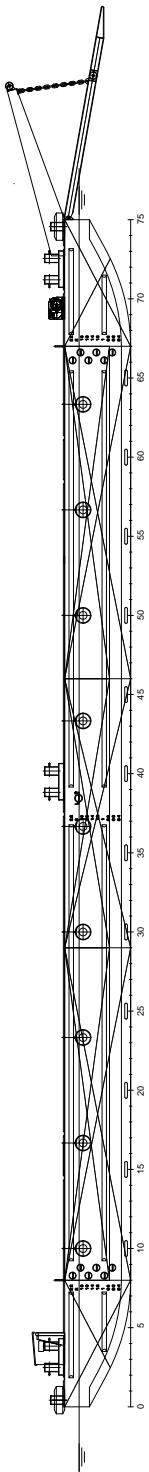
OPTIONAL EQUIPMENT

FLOW METER One flow meter incorporated in the F.O.
Cargo manifold

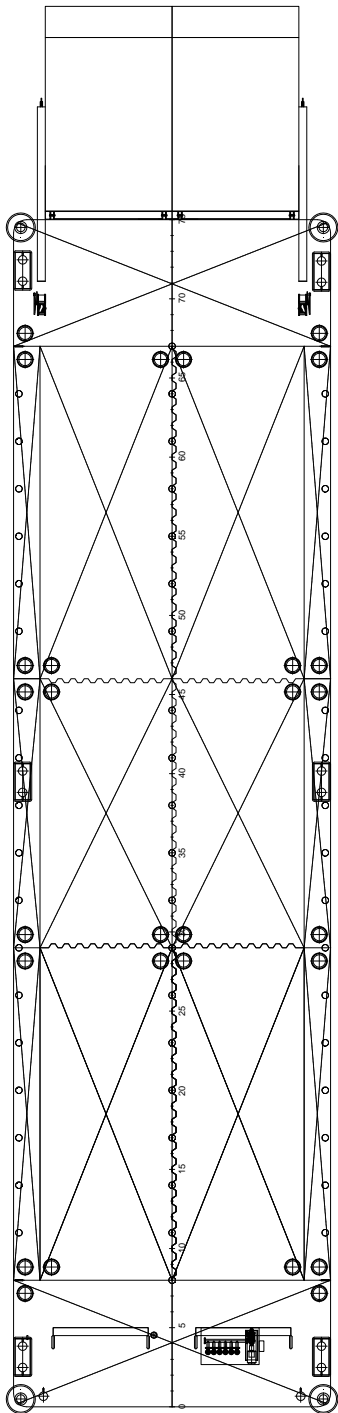
* Mentioned deadweight is calculated and excluding optional equipment

* Picture shows an Artist Impression of a Stan Pontoon 4512 with full option package

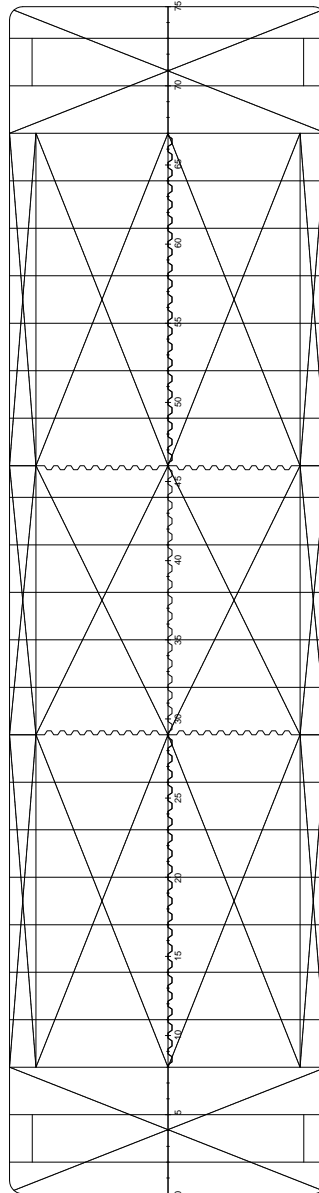
SIDE VIEW



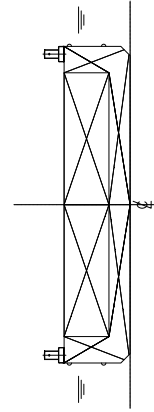
TOP VIEW



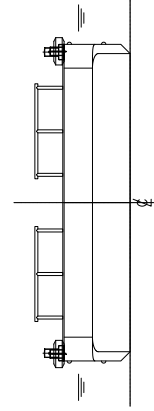
VIEW BELOW MAIN DECK



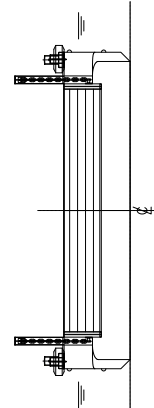
CROSS SECTION



AFT VIEW



FRONT VIEW



DAMEN STAN PONTOON® 4512

"YN 524204 / YN 524205 / YN 524206"

DAMEN

DAMEN SHIPYARDS GORINCHEM

Member of the DAMEN SHIPYARDS GROUP



Industrieterrein Avelingen West 20
4202 MS Gorinchem

P.O. Box 1
4200 AA Gorinchem
The Netherlands

phone +31 (0)183 63 99 11
fax +31 (0)183 63 21 89

info@damen.com
www.damen.com