

# DAMEN SHOALBUSTER® 3512

## "YN571732" NOORDSTROOM

### GENERAL

YARD NUMBER	YN571732 (Damen Shipyards Hardinxveld)
DELIVERY DATE	End of March 2016
BASIC FUNCTIONS	Towing, mooring, pushing, anchor handling, dredge support, Ocean Going,
CLASSIFICATION	Bureau Veritas I✕HULL • MACH Tug Unrestricted navigation, AUT UMS,
NATIONAL AUTHORITIES	Dutch Shipping Inspectorate Unrestricted Navigation
FLAG	The Netherlands
OWNER	Van Wijngaarden Marine Services

### DIMENSIONS

LENGTH O.A.	34.80	m
BEAM MLD.	12.00	m
DEPTH AT SIDES	4.30	m
DRAUGHT AFT (FULLY LOADED APPROX.)	3.40	m
DRAUGHT AFT @ 10% CONDITION	2.90	m
DEADWEIGHT 98% CONDITION	285	ton
GROSS TONNAGE	498	GT

### TANK CAPACITIES (APPROX)

FUEL OIL	255.0	m <sup>3</sup>
FRESH WATER	25.0	m <sup>3</sup>
FRESH WATER TRIM	18.0	m <sup>3</sup>
SEWAGE	5.8	m <sup>3</sup>
SLUDGE	2.0	m <sup>3</sup>
DIRTY OIL	4.5	m <sup>3</sup>
LUBRICATION OIL	3.3	m <sup>3</sup>
HYDRAULIC OIL	2.0	m <sup>3</sup>
GEAR OIL	3.7	m <sup>3</sup>
BILGE WATER	5.0	m <sup>3</sup>

### PERFORMANCES (APPROX.)

BOLLARD PULL AHEAD.	53.0	ton(m)
SPEED	11.5	knots

### PROPULSION SYSTEM

MAIN ENGINES	3x Caterpillar C32-TTA ACERT
TOTAL POWER	2910 bkW (3957 bhp) @ 1800 rpm
GEARBOXES	3x Reintjes WAF675L / 7,07:1
PROPULSION	3x Promarin fixed pitch propeller
DIAMETER	3x 2250 mm in V.d. Giessen Optima nozzles
BOWTHRUSTER	300 bhp, Electrical driven Kalkman Beta 300E, 320pk, 60Hz, 440VAC, with prop. of Ø 960mm

### AUXILIARY EQUIPMENT

GENERATOR SETS	2x Caterpillar C7.1
CAPACITY	2x 187,5 kVA, 50 Hz, 230/400VAC
TRANSFER PUMPS	For Fresh Water: SIHI, 50 m <sup>3</sup> /h @ 4.8 bar For Fuel Oil: SIHI 50 m <sup>3</sup> /h @ 4.8 bar
FUEL OIL SEPARATOR	Westfalia OTC-2
HYDRAULIC SET	Electrical driven with two E-motors 110kW, and one 52kW, 60Hz, 1800rpm 440VAC
E-POWER GENERATION	Combined with center C32 main engine, with clutch able Leroy Somer LSA49.1 generator 600EKW, 60Hz, 1800rpm, 440VAC

### DECK LAY-OUT

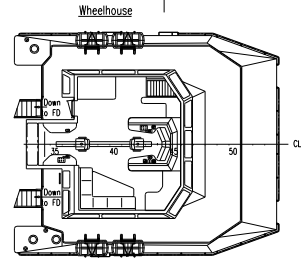
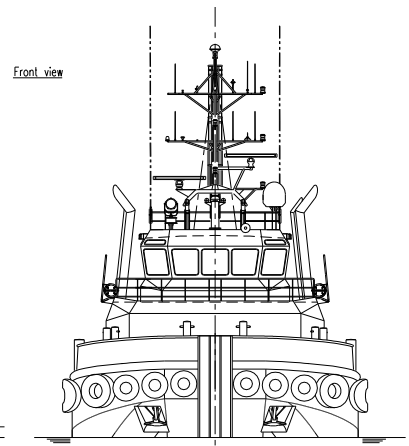
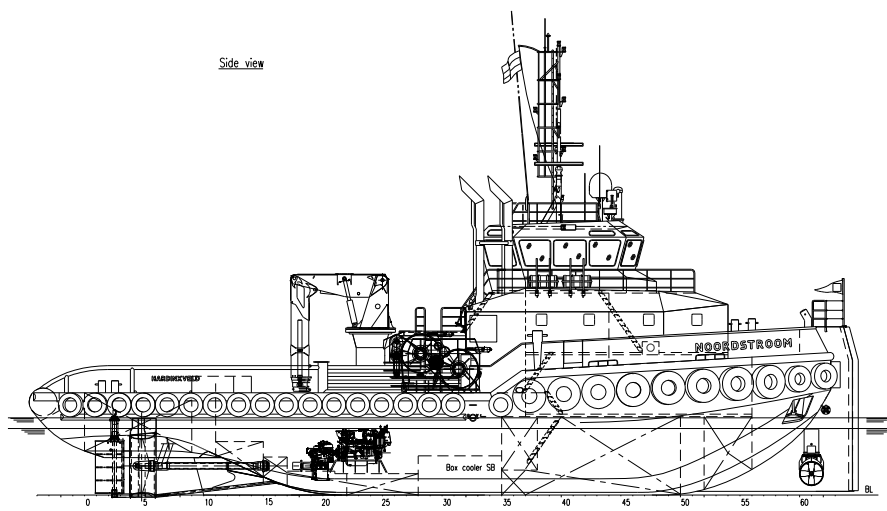
ANCHOR	2x 450 kg Pool (HHP)
CHAIN	22 mm short-link anchor chain 247.5 m
ANCHOR WINCH	2x Kraaijeveld hydraulic
DECK CRANE	1x Heila HLRM230-4SL, 10,3Ton @ 16,5m and 24,4Ton @ 7,89m,
ANCHOR HANDLING / TOWING WINCH	1x Kraaijeveld Waterfall winch, towing pull 59,1 ton @ 9,51 m/min @ 1 <sup>st</sup> layer, slack 11,8T @ 32,4m/min, holding force 115T, , wire capacity 1x 1000m Ø 48mm,
ACC. TO REGULATIONS OF NOBLE DENTON	Anchor handling pull 101,7ton @ 5,7 m/min @ 1 <sup>st</sup> layer, 20,4T @ 19,4m/min, holding force 150T, wire capacity 1x 600m Ø 48mm,
TOWING PINS	1x WK 2 flipper 1 chain stopper for 100T SWL
TUGGER WINCH	1x Dromec HPV-12000 12T @ 20m/min 1st lay.

### ACCOMMODATION

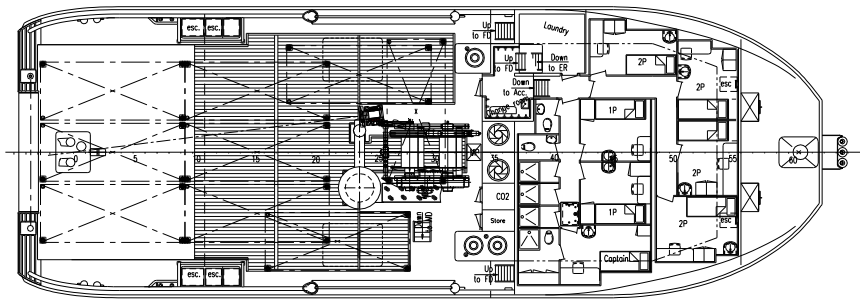
Heated and air-conditioned living spaces for 11 persons, consisting of a captain's cabin, and four double crew cabins, and two single crew cabin, a galley and a mess and sanitary facilities according to ILO2006 rules.

### NAUTICAL AND COMMUNICATION EQUIPMENT (GMDS A3)

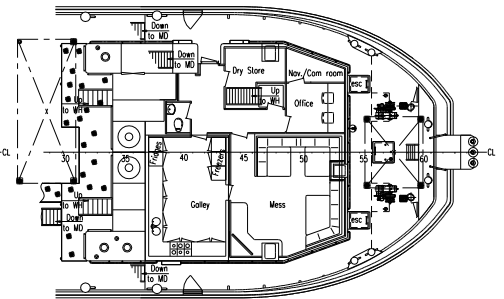
SEARCHLIGHTS	3x Pesch 1000W, E-actuated
MAGNETIC COMPASS	1x Kottter Cassens en Plath Reflecta 1
GYRO COMPASS	1x Anschuetz Standard 22 Compact
RADAR	2x Furuno FAR-2117
GPS	1x Furuno GP-170D
AUTOPILOT	1x Simrad AP-70
AIS	1x Furuno FA-150
ECHOSOUNDER	1x Furuno FE-800 + 1x Sigma 120
SPEEDLOG	1x Furuno DS-80
VHF RADIO TELEPHONE	2x Sailor RT6222, 25 W, 1x Sailor 6248
GSM	1x Sagem RT-3000
HANDHELD VHF	2x Jotron TR20
NAVTEX	1x Furuno NX 700A
MF/HF TRANCEIVER	1x Furuno FS-1575 with DSC
INMARSAT-C	2x Thrane & Thrane 6110
BRIDGE WATCH ALARM	1x Marble 421
WEATHERFAX	1x Meteoscanner combined into Maritime PC
INTERCOM	1x Radio Zeeland Sigma 700
FLEET SYSTEM	1x Thrane & Thrane Fleetbroadband 150
SATTELITE TV SYSTEM	1x Seatel ST24
WIND INDICATOR	1x Meteo system Obsermet OMC-115
MARITIME PC'S	1x Computer for chart software Transas NS4000, 1x Computer for communication



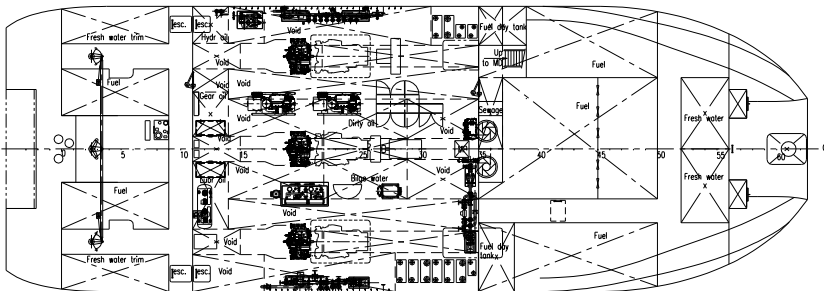
Main deck



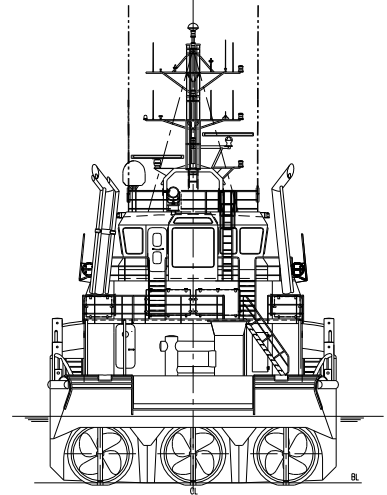
Forecastle deck



Below main deck



Rear view



# DAMEN SHOALBUSTER® 3512

"YN571732" NOORDSTROOM



DAMEN SHIPYARDS HARDINXVELD

Member of the DAMEN SHIPYARDS GROUP



Rivierdijk 551  
3371 EB Hardinxveld-Giessendam

P.O. Box 60  
3370 AB Hardinxveld-Giessendam  
The Netherlands

phone +31 (0)184 61 30 88  
fax +31 (0)184 61 77 93

info@damen-hardinxveld.nl  
www.damenshipyardshardinxveld.nl