



DAMEN STAN PONTOON® 12032

"TOBIAS"

GENERAL

YARD NUMBER	523951
DELIVERY DATE	May 2013
TYPICAL APPLICATIONS	Deck Cargo, RoRo Cargo
TYPICAL AREA OF OPERATION	Deep sea, Coastal waters, Harbours, Inland waters
CLASSIFICATION	Lloyd's Register + 100 AT Pontoon IWS for non-propelled and unmanned vessels
FLAG	Canada
OWNER	McKeil Malaspina Ltd.

DIMENSIONS

LENGTH MOULDED	120,00 m
BEAM MOULDED	32,20 m
DEPTH MOULDED	8,10 m
DRAUGHT MAX	6,20 m
DEADWEIGHT MAX.	20.150 ton

CAPACITIES

DECK LOAD	20 ton/m ²
BALLAST TANKS	22 pcs. : 21.010 m ³
DECK THICKNESS	20 mm extra heavy deck

BALLAST SYSTEM

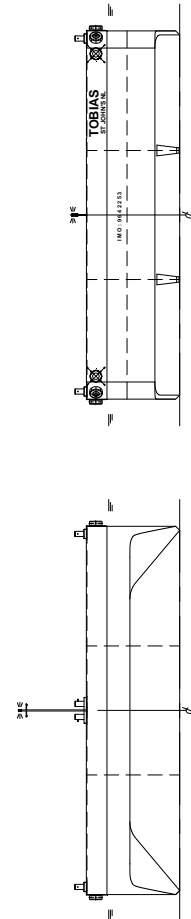
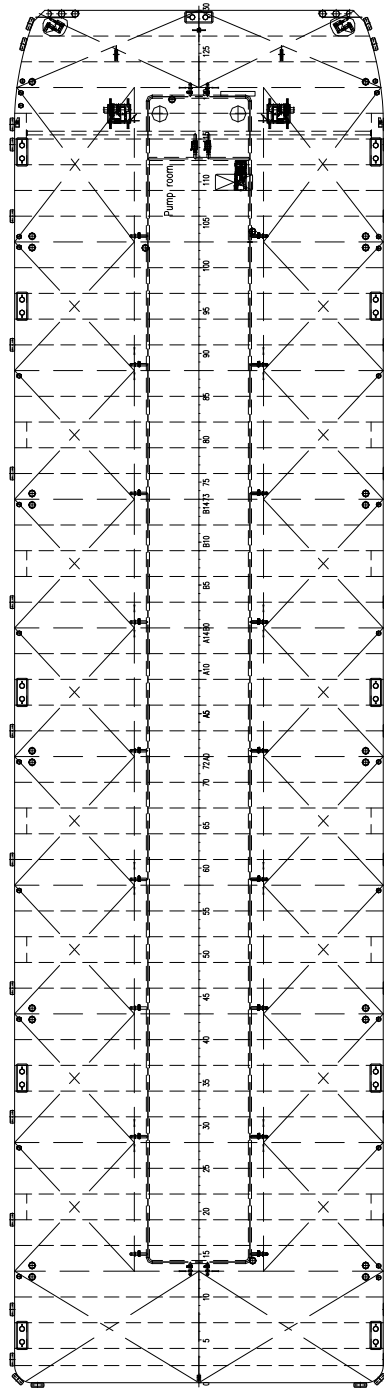
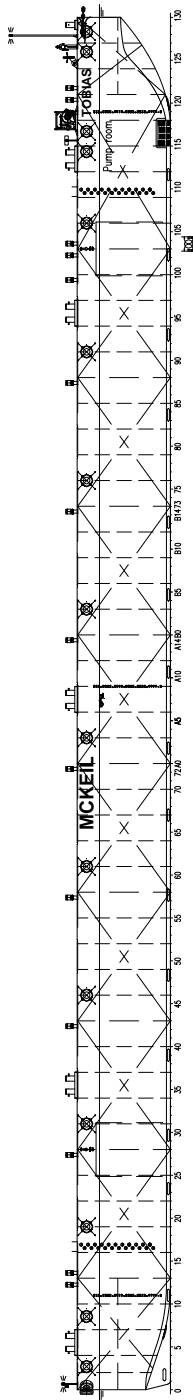
BALLAST PIPES AND VALVES	DN 250
VALVE OPERATION	Manually operated from walkway in the center line void
DE-AERATION	Removable de-aeration heads, mounted on flanges. Flush deck when heads are removed.
SOUNDING	By means of opening of the manholes

DESIGN CONDITIONS

SEA WATER TEMPERATURE	0° to +35° C
OUTSIDE AIR TEMPERATURE	-5° to +45° C

STANDARD EXECUTION

BALLAST RING LINE	Ballast ring line DN 250 is provided
DE-AERATION	Standard de-aeration heads are provided
TOWING BRACKETS	Two on PS and two on SB, in recess at fore deck covered with steel gratings
FAIR LEADS	At the foreside of the towing brackets fairleads are integrated in the construction
BOLLARDS	11 pcs.
DRAUGHT MARKS	At fore, midship and aft on PS and SB every 20 cm
BOARDING LADDERS	2 on SB and 2 on PS in recesses of the hull
CATHODIC PROTECTION	Zinc anodes on underwater part of the hull
MANHOLES	Flush manholes
PUMP ROOM ENTRANCE	Flush single point opening / closing type
BALLAST PUMP	Two 400 m ³ /h ballast pumps
GENERATOR SET	CAT C4.4 generator set
LIGHTING	Lighting in pump room and center void
WINCHES	2 Anchors / Mooring winches
ANCHORS	2 Anchors and wires
FENDERING	Air plane tyres (1100 mm)
NAVIGATION LIGHTING	Navigation lights according to international towage regulations
TOW CHAINS	Tow chains for connection to a towing bridle



DAMEN STAN PONTOON® 12032

"TOBIAS"

DAMEN

DAMEN SHIPYARDS GORINCHEM

Member of the DAMEN SHIPYARDS GROUP



Industrieterrein Avelingen West 20
4202 MS Gorinchem

P.O. Box 1
4200 AA Gorinchem
The Netherlands

phone +31 (0)183 63 99 11
fax +31 (0)183 63 21 89

info@damen.nl
www.damen.nl