

#### BENEFITS OF DAMEN CIVIL

- Founded in 1927, our consultancy is based on many years of operating newbuild and repair facilities
- We have broad experience with many yard and drydocking concepts all over the world
- Our services vary from basic advice to extensive investigations and even complete research programmes
- Damen Civil provides practical and economical solutions based on the client's preferences taking into account local circumstances
- Our sustainable and reliable concepts improve the shipyard's competitiveness
- Damen Civil can provide state-of-the-art impressions and animations to help you visualise the end result
- We stimulate local employment and transfer of knowledge and skills
- Training can take place either at the customer's yard or at one of Damen's own facilities

# CONCEPTS & CONSULTANCY



## DAMEN CIVIL

## DAMEN CIVIL



# DAMEN

DAMEN SHIPYARDS GROUP

Industrieterrein Avelingen West 20  
4202 MS Gorinchem

P.O. Box 1  
4200 AA Gorinchem  
The Netherlands

phone +31 (0)183 63 99 22  
fax +31 (0)183 63 21 89

info@damen.com  
www.damen.com



# DAMEN



# CONCEPTS & CONSULTANCY

Damen owns and operates over 30 shipyards worldwide and has excellent know-how based on more than 40 years of top-class shipbuilding and repair. Damen Civil has gained unrivalled expertise in the development, design, construction and rehabilitation of shipyard facilities. We provide a broad range of consultancy services and have experience with many shipyard and drydocking concepts.

## A tailor made concept for every yard

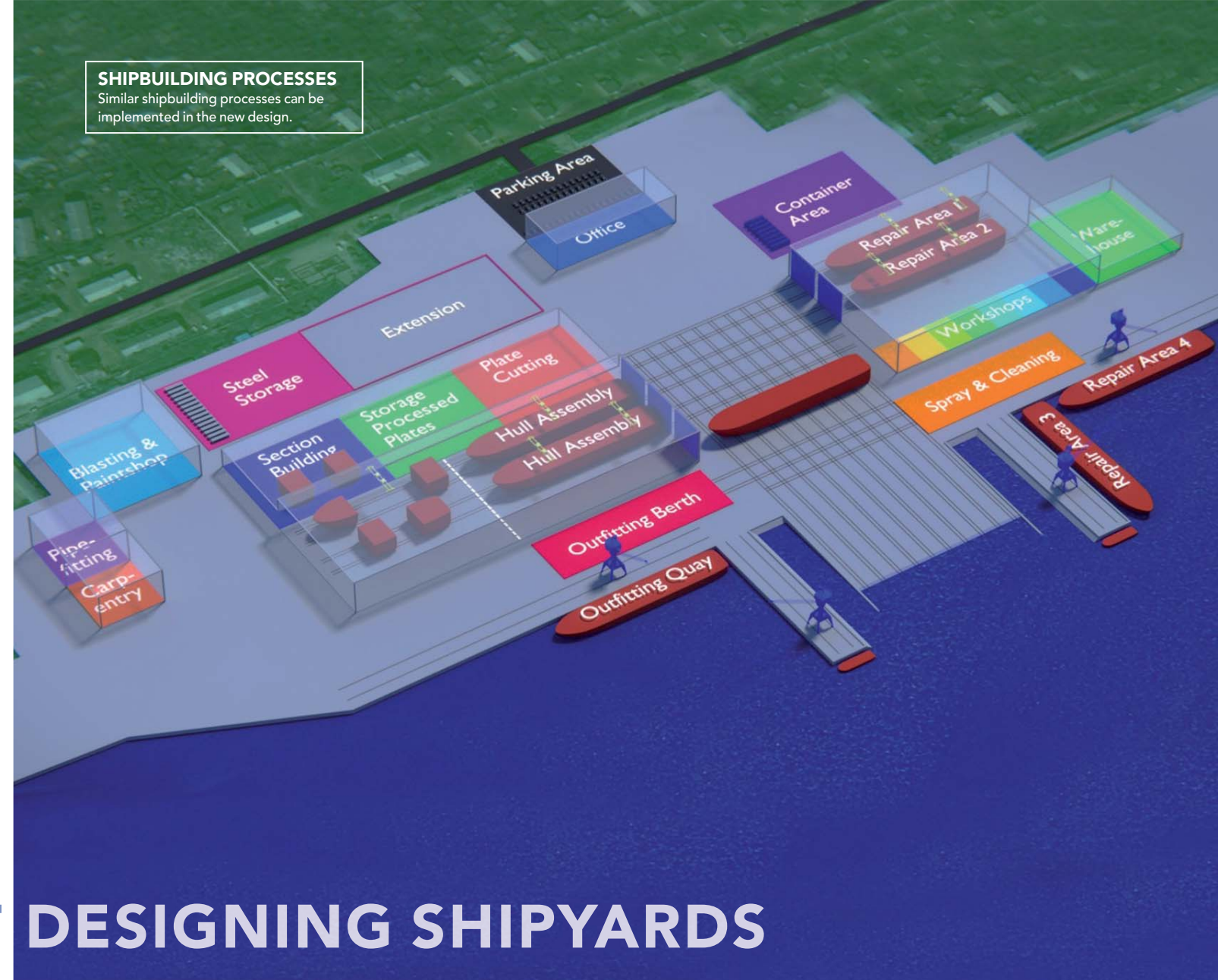
- Floating drydock
- Graving drydock
- Marine travel lift
- Slipway
- Ship lift
- Transfer area
- Outfitting quay
- Jetty / finger piers
- Production and repair halls
- Warehousing and workshops
- Sheds and storage
- Offices and training centres

## An expert for every specialist task

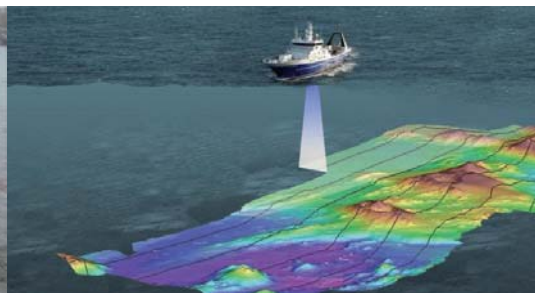
- Feasibility studies
- Budget estimates and project scheduling
- Process flow control and optimisation logistics
- Contract and tender management
- Project and construction management
- HSEQ management and services
- Assessments and site visits
- Topographical and bathymetrical surveys
- Geotechnical and morphological investigations
- Functional requirements and conceptual design
- Basic design and detailed engineering
- Training local staff, crew and labour



# UNRIVALLED AT DESIGNING SHIPYARDS



**SHIPBUILDING PROCESSES**  
Similar shipbuilding processes can be implemented in the new design.



ASSESSMENTS AND SITE VISITS

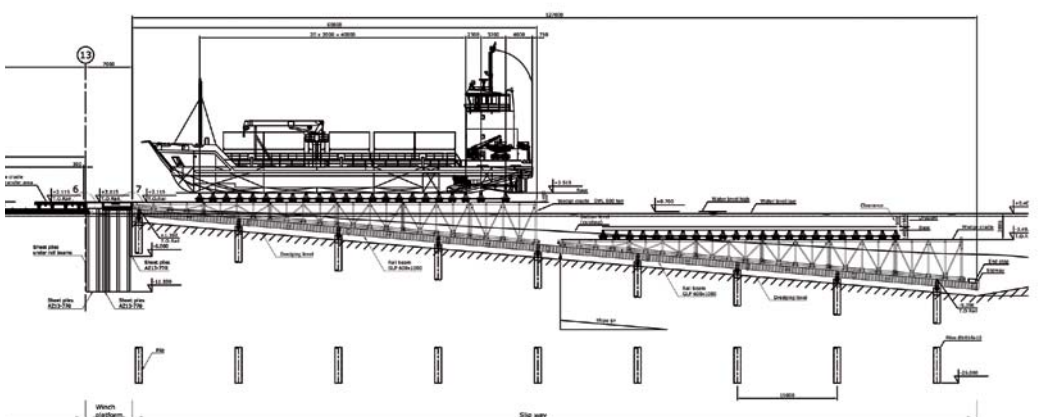
UNDERWATER SURVEYS AND SERVICES

GEOTECHNICAL AND BATHYMETRIC STUDIES

FLOATING DRYDOCKS

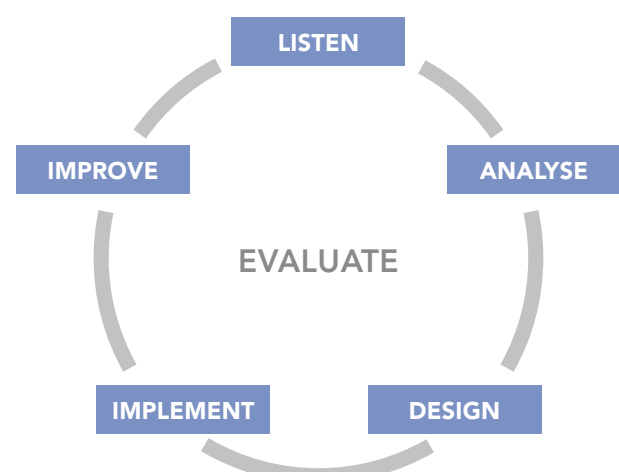
GRAVING DRYDOCKS AND SLIPWAYS

HALL FACILITIES



TRAINING

ENGINEERING CONSULTANCY



We can provide you with a wide range of maritime construction services. These services cover the interface between ship and shore. We combine the strength of global standard with local workforce. This results for our customers in practical solutions, local employment, transfer of knowledge and skill development.



CIVIL WORKS